

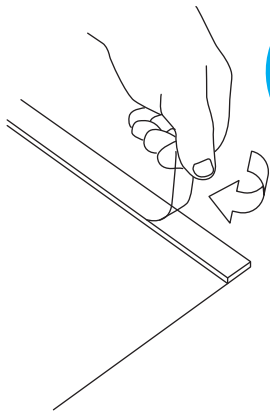


# MAGIK FRAME Assembly Instructions

A re-usable re-positional sign holder that displays Posters on any flat surfaces without leaving any sticky residue behind scratch resistant magik frames can be used hundreds of times. **"WIPE DOWN AND ALLOW TO DRY TO RE-USE"**

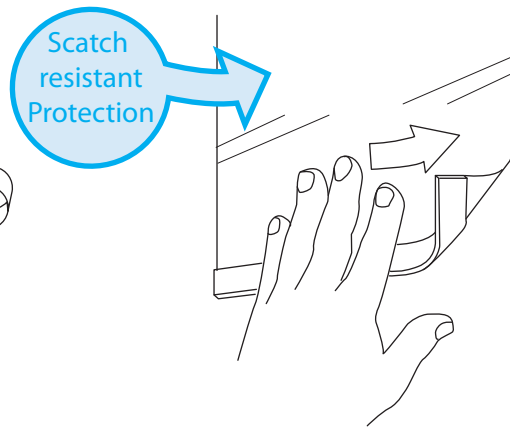
AVAILABLE in sizes A7 - A2 Landscape and Portrait

1



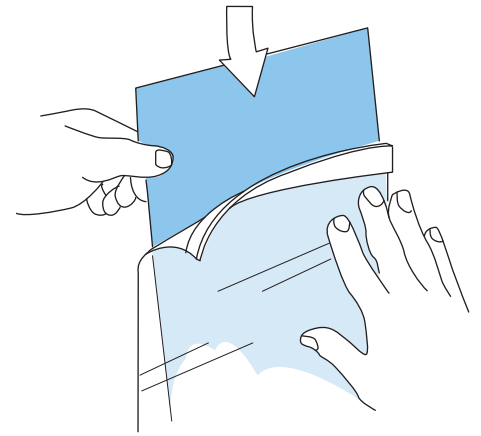
Remove the liner from back of magik frame strips.

2



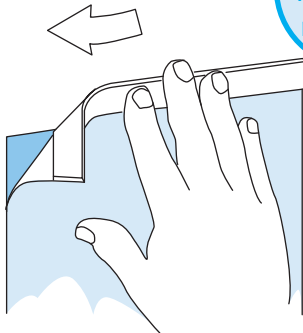
Apply to any smooth surface pressing on the bottom strip first.

3



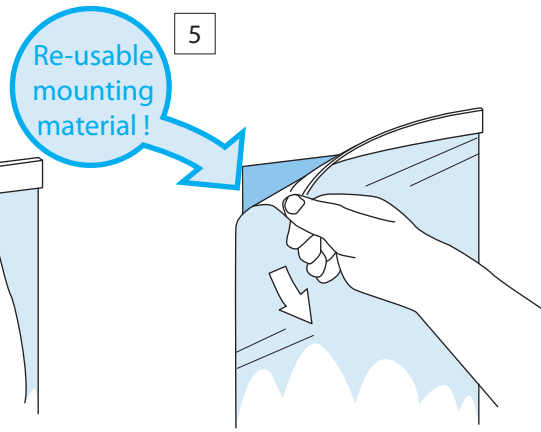
Insert sign behind the frame.

4



Press down the top strip.

5



To Remove simply pull off

6

## FEATURES

- No lasting residue
- No messy tapes
- Reusable/re-positionable
- Durable construction
- Multiple stock sizes
- Custom branding options
- Custom sizes available
- Scratch resistant front
- Available in black & white

MAGIK FRAME WORKS GREAT ON:

- |                         |                           |                  |
|-------------------------|---------------------------|------------------|
| ■ Glass Doors & Windows | ■ Smooth Painted Surfaces | ■ Metal Surfaces |
| ■ Fridge & Cooler Doors | ■ Plastic surfaces        | ■ Wood Surfaces  |
| ■ Hot & Cold Surfaces   | ■ Laminated Panels        | ■ Tiled surfaces |



magikframe.eu